

Coastal Latitude

Cozy enough for two—yet spacious enough to host a crowd—this South Carolina holiday home bends tradition, even as it honors its locale.

WRITER MARA BOO
PHOTOGRAPHER RICHARD LEO JOHNSON
PRODUCER SANDRA L. MOHLMANN

Tongue-and-groove wall and ceiling paneling in one of the home's two offices relaxes beefy trim molding. "We respected tradition with wainscoting and trim but modernized it by painting everything the same color as the walls," interior designer Marc Janecki says.



THIS PHOTO: With its traditional diamond-pattern ceiling trim and streamlined fireplace surround, the living room showcases the home's mix of formal and informal elements. OPPOSITE: Nestled among palmetto palms and oak trees dripping with Spanish moss, this Bluffton, South Carolina, retreat boasts vacation-oriented amenities such as 4,000 square feet of sit-awhile porch space.





The phone call was unexpected, but Florida interior designer Marc Janecki was soon on a plane after longtime clients asked him to come view a new property they'd bought in South Carolina.

The couple's primary wish: a refined vacation home that would easily gather their three grown children and their families while also providing intimate spaces for two. Plus, the couple wanted to pay homage to the stately riverside homes of Charleston and Savannah—think gracious entry halls and sweeping porches—but in a clean, modern fashion.

Residential designer Eric Pulyung drew up plans for a standing-seam metal roof, columns, railings, and abundant porch space to reinforce Low Country charm. Yet the roof strikes a contemporary note, and columns and railings are scaled and detailed to make the house feel airy, rather than grounded in history. Large roof overhangs diminish what might have been imposing grandeur, while innovative building products—such as low-maintenance siding that mimics the look of natural wood—acknowledge this is a home meant for relaxing. “This house is a streamlined version of tradition, inside and out,” Janecki says. “It's right at home in the South, but it's definitely got an edge.”

Inside, the balancing act continues. “Historically, homes of this caliber would have had shapely trim details, paneled walls, and elaborate plaster ceilings,” Pulyung says. “We wanted the feel but not the fuss, so we went with square, angled trims, simple profiles around windows and doors, and ceilings covered in clear poplar that we painted white.”

Generously proportioned rooms transition easily from one to the next and spill outside through French doors. “There are plenty of places for people to interact, converse, and be comfortable,” Janecki says. “The whole house invites you to plop down and put your feet up.”

Cloaked in cotton and linen, furnishings are united by a nearly colorless palette inspired by the ethereal, misty fog that can hang over the nearby May River. “Everything flows from room to room, from inside to out, and from outside back in,” Janecki says. “Nothing jars your eye.”

FOR RESOURCES, SEE PAGE 138.



“We wanted everything about the house to be quiet. The effect is unbelievably calming.”

— INTERIOR DESIGNER
MARC JANECKI



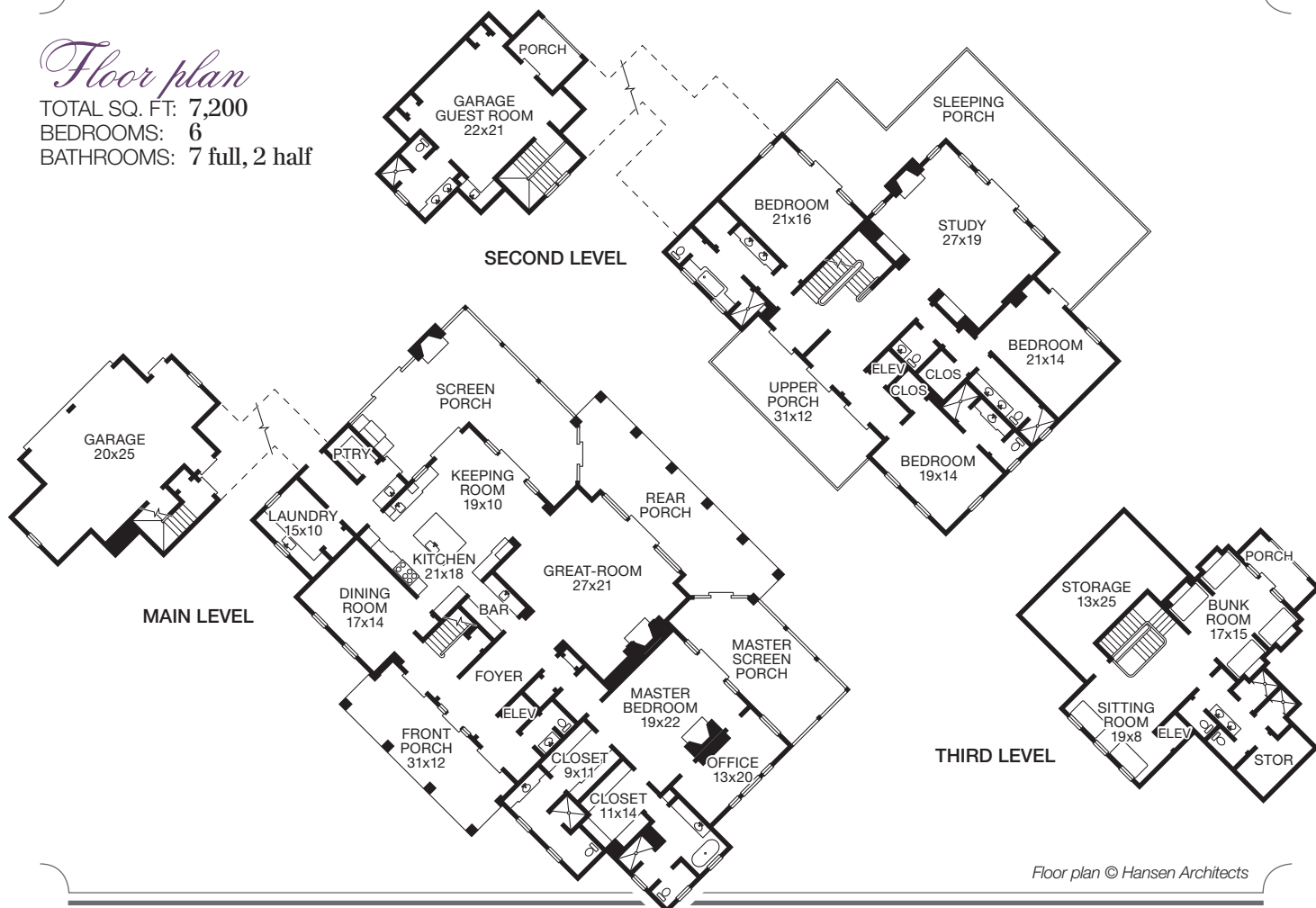
LEFT: The kitchen's pale gray cabinetry and silver travertine floors are offset by polished-marble countertops and backsplashes. TOP: Iron light fixtures and a scored-metal table base modernize the formal dining room. Art painted by the homeowner offers the room's only real color. ABOVE: Crowned with tongue-and-groove boards and grounded with silver travertine, the screen porch is a favorite spot for enjoying morning coffee or a lazy afternoon with a good book. The faux-bois concrete table is from France.

RIGHT: Soft blue tones distinguish the master bedroom, where crewel-embroidered panels hang at the windows. The bedside table—one of a pair—is new but was selected by Janecki to evoke a handed-down feel. OPPOSITE: Polished marble anchors one of a pair of master baths; mirrored, paneled walls confer glamour and bounce light throughout the space.



Floor plan

TOTAL SQ. FT: 7,200
BEDROOMS: 6
BATHROOMS: 7 full, 2 half



Floor plan © Hansen Architects

